



6 Shropshire Terrace
Maidstone
ME15 8BA

Guide Price £275,000 - £300,000

6
Shropshire Terrace

Maidstone
ME15 8BA

Well maintained 3 bedroom semi detached house



Description

Highly sought after semi-detached family house quiet cul-de sac built in the 1950's. In the family's ownership for 35 years, in need of some improvement but well maintained with a low maintenance 43' east facing rear garden, gas heating, replacement double glazed windows, within 1/4 mile of local shops and schools, and half mile from Mote Park with 450 acres.

Location

Located in this well established and popular residential position on the southern outskirts of the town, conveniently placed within easy access of a good selection of local amenities with shops at Cumberland parade catering for everyday needs, local infant and junior school together with regular bus services into town centre some 1 1/2 miles distant. Mote Park with its 450 acres, boating lake, leisure centre and municipal swimming pool, is within a 1/4 of a mile. The County Town offers excellent facilities including shops at Fremlins Walk and The Mall, two museums, theatre, county library, multi-screen cinema and wide selection of schools and colleges for older children. There are two railway stations connected to London, the M20/A20/M2/M25 and M26 motorways are also close by and offer direct vehicular access to both London and The Channel Ports.

Council Tax Band

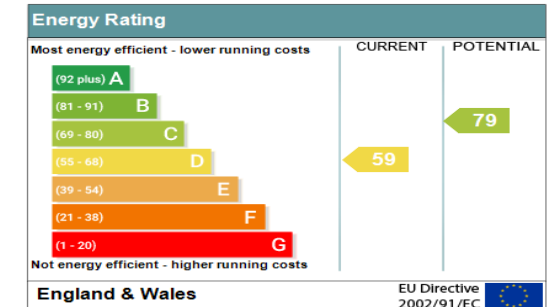
C

VIEWINGS STRICTLY BY APPOINTMENT

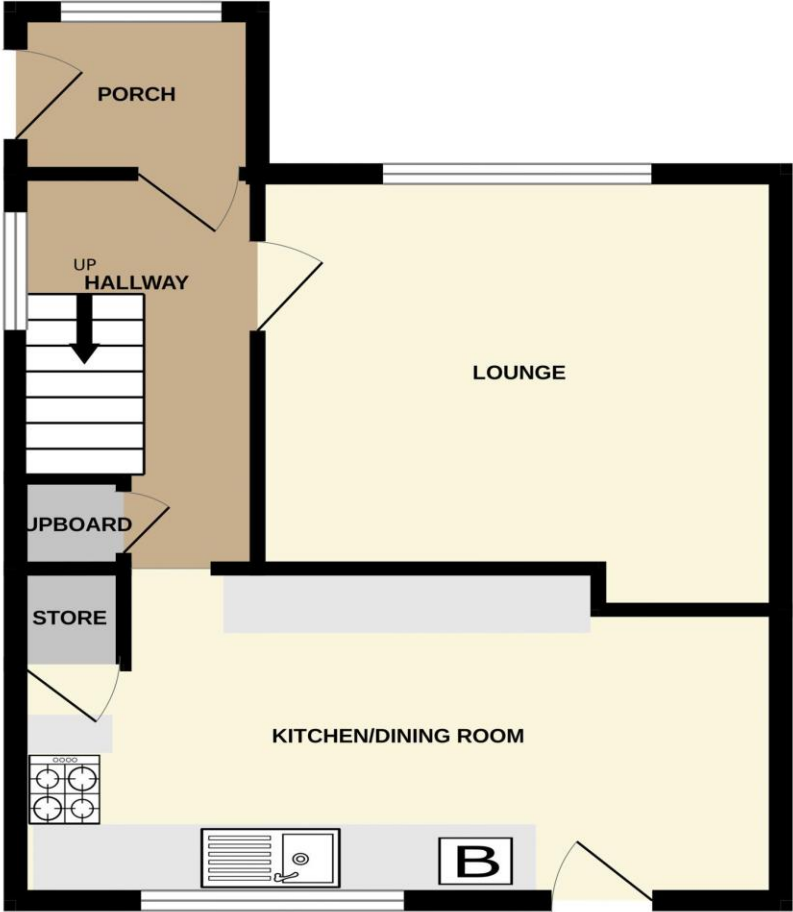
Agents Note: All Properties for sale have a property information questionnaire completed by the vendors, which is available upon request.



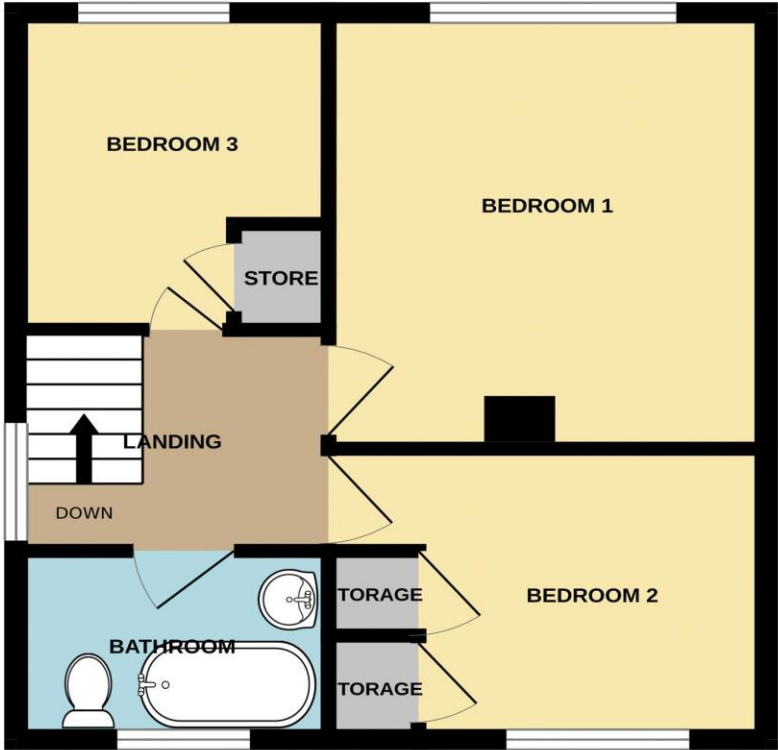
Address: 6 Shropshire Terrace, MAIDSTONE, ME15 8BA
RRN: 0300-4443-0822-7303-3943



GROUND FLOOR
412 sq.ft. (38.3 sq.m.) approx.



1ST FLOOR
375 sq.ft. (34.8 sq.m.) approx.



TOTAL FLOOR AREA : 787 sq.ft. (73.1 sq.m.) approx.

Whilst every attempt has been made to ensure the accuracy of the floorplan contained here, measurements of doors, windows, rooms and any other items are approximate and no responsibility is taken for any error, omission or mis-statement. This plan is for illustrative purposes only and should be used as such by any prospective purchaser. The services, systems and appliances shown have not been tested and no guarantee as to their operability or efficiency can be given.
Made with Metropix ©2023



ENTRANCE PORCH

Partly glazed UPVC entrance door, window to front, door to:

ENTRANCE HALL 11' 0" x 5' 6" (3.35m x 1.68m)

Window to side, radiator, staircase to first floor, understairs storage cupboard.

LOUNGE 13' 1" x 12' 2" (3.98m x 3.71m)

Picture window to front, radiator, fireplace recess.

KITCHEN/DINING ROOM 18' 10" x 9' 4" (5.74m x 2.84m)

Fitted with units having oak door and drawer fronts, antique style fittings. sink unit with mixer tap, 4 burner gas cooker, oven and grill beneath, breakfast bar, plumbing for automatic washing machine, ceramic tiled floor and splashback, Potterton wall mounted gas fired boiler, supplying central heating and domestic hot water throughout, radiator, window and half glazed door to rear, understairs storage cupboard.

ON THE FIRST FLOOR

LANDING 7' 8" x 6' 4" (2.34m x 1.93m)

Window to side, access to roof space.

BEDROOM 1 12' 5" x 10' 10" (3.78m x 3.30m)

Picture window to front, Western aspect, radiator.

BEDROOM 2 10' 10" x 8' 0" (3.30m x 2.44m)

2 double built in wardrobe cupboards, window to rear, eastern aspect, radiator.

BEDROOM 3 8' 10" x 7' 9" (2.69m x 2.36m)

Built in storage cupboard, window to front, western aspect, radiator.

BATHROOM 7' 8" x 4' 9" (2.34m x 1.45m)

Panelled bath, pedestal hand basin, low level wc, 3/4 tile walls, radiator.

OUTSIDE

Small front garden with brick boundary wall, side pedestrian access. 43' rear garden, paved with shingle relief, timber shed, fully fenced.

Directions

From Maidstone leave via the Ashford Road A20, after approximately one mile turn right at the traffic lights into Willington Street. Northumberland Road will be found sixth turning on the right after approximately half a mile. Take the 1st turning on the left into Dunster Terrace, then take the 1st let into Wiltshire Way, Shropshire Terrace can be found at the end on the left and the property can be found a short distance on the right hand side.



SALES OFFICES
01622 671200



sales@ferrisandco.net
www.ferrisandco.net



Penenden Heath Parade,
Penenden Heath, Maidstone, Kent ME14 2HN

